

WAVE ROUTINE SCREENING FLOWCHART

Following on the spate of PCR negative CMD symptomatic samples, we have adopted the following primers (Table 1) and workflow (Figure 1) for the screening of all samples collected during surveys. Further instructions for full genome sequencing of DNA-A and B for ACMV and EACMV, and also modalities for sending unreactive symptomatic samples to Dr Mutuku will be sent in as soon as they are validated.

Table 1: APPROVED WAVE PRIMERS

	Primer name	Primer sequences (5' to 3')	Target region	Size	Reference
1	JSP 001	ATGTCGAAGCGACCAGGAGAT	ACMV DNA-A (CP)	783 bp	Pita et al., 2001
	JSP 002	TGTTTATTAATTGCCAATACT			
2	ACMVBF	TCGGGAGTGATACATGCGAAGG C	ACMV DNA-B (BV1/BC1)	628bp	Matic et al., 2012
	ACMVBR	GGCTACACCAGCTACCTGAAGC T			
3	JSP 001	ATGTCGAAGCGACCAGGAGAT	EACMV DNA-A (CP)	780bp	Pita et al., 2001
	JSP 003	CCTTTATTAATTTGTCACTGC			
4	CMBRepF	CRT CAA TGA CGT TGT ACC A	EACMV DNA-A (AC1)	650 bp	Alabi et al., 2008
	EACMVRe pR	GGT TTG CAG AGA ACT ACA TC			
5	VNF031/F	GGATACAGATAGGGTTCCCAC	EACMV-CM DNA-A (AC2/AC3)	≈ 560bp	Fondong et al., 2000
	VNF032/R	GACGAGGACAAGAATTCCAAT			
6	ACMV21for	GCAGTGATGAGTTCCCCGGTGC G	DNA-A (AC3-AC2-AC1) of ACMV, EACMV, EACMCV, EACMKV, EACMMV, EACMZV and SACMV	552 bp	Matic et al., 2012
	ACMV21rev	ATTCCGCTGCGCGGCCATGGAG ACC			

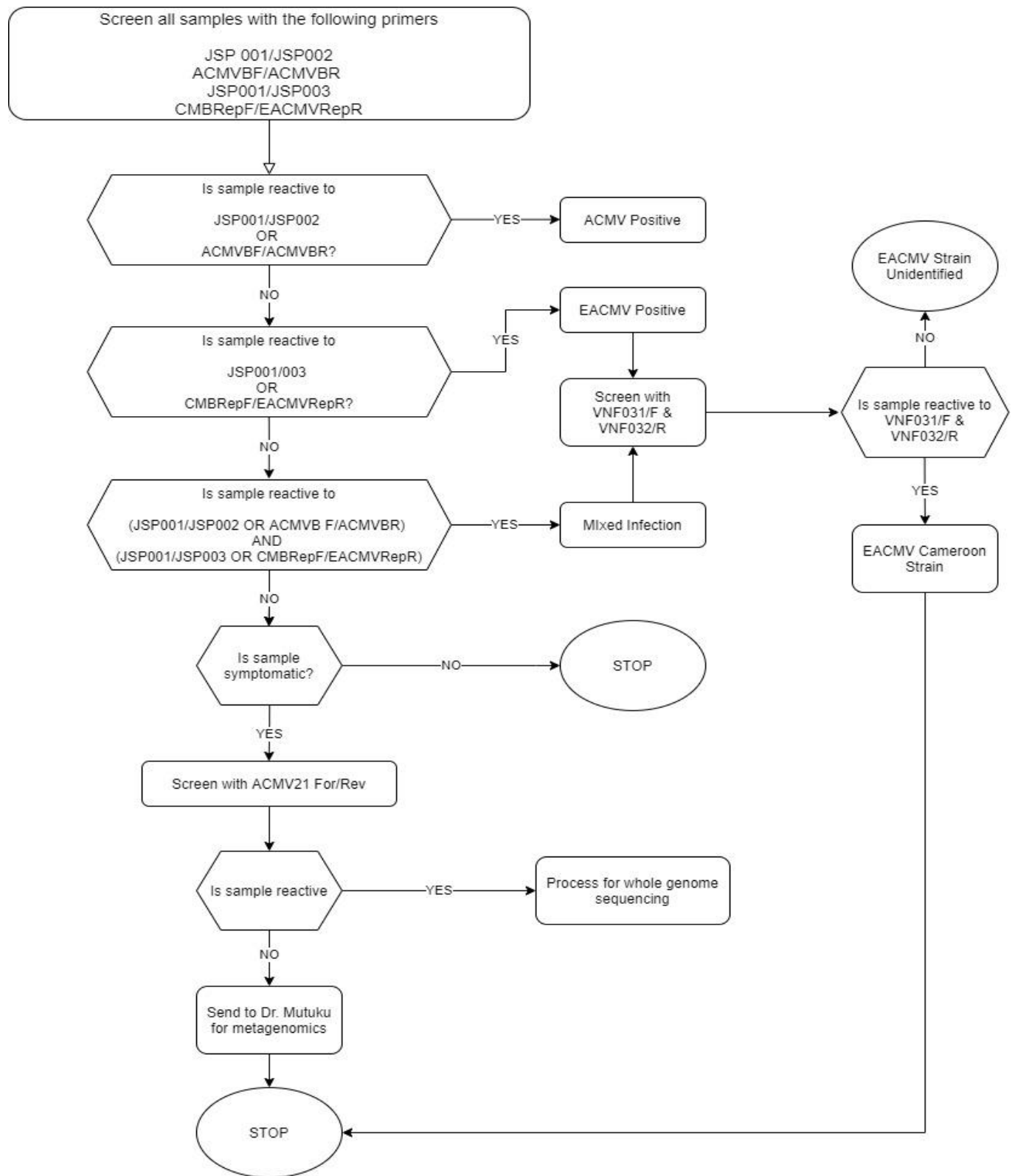


Figure 1: Screening Workflow for samples collected during routine survey.